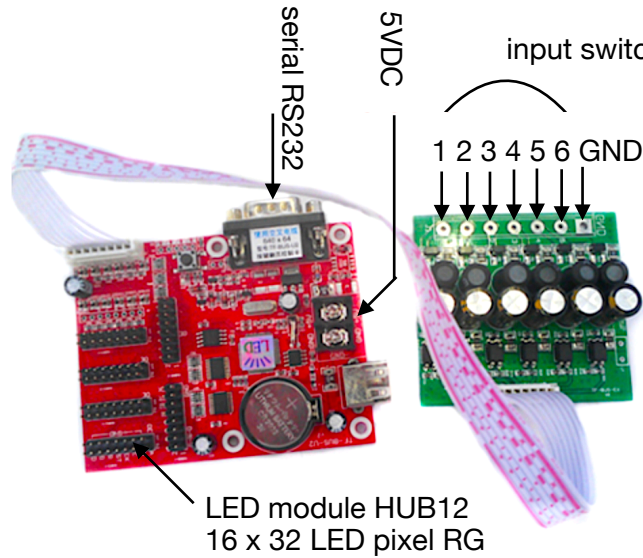


LED controller TF-BUS-U1/U2



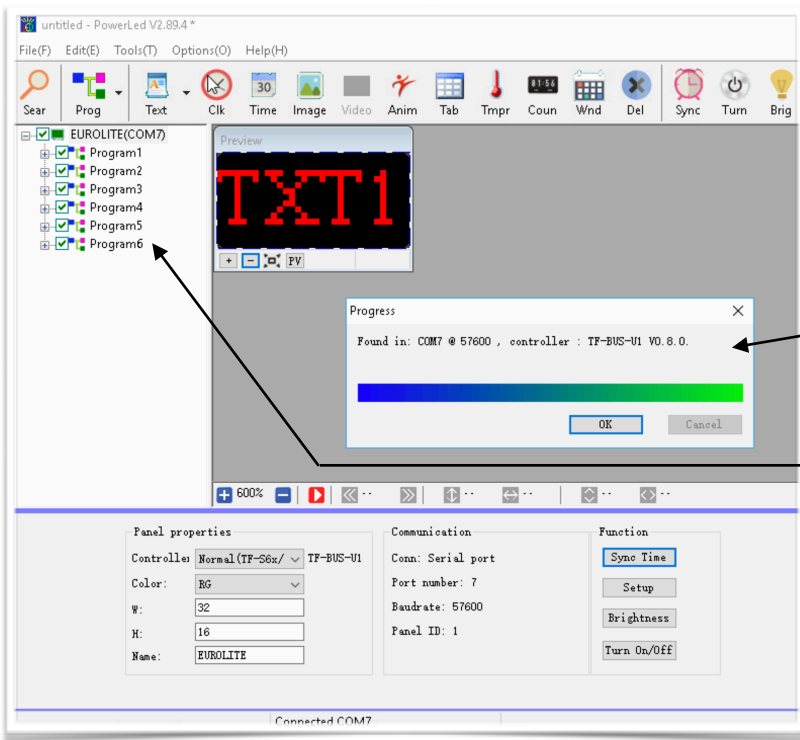
download and install



PowerLed

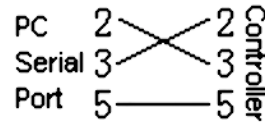
PC software V2.89.4

LED module HUB12
16 x 32 LED pixel RG



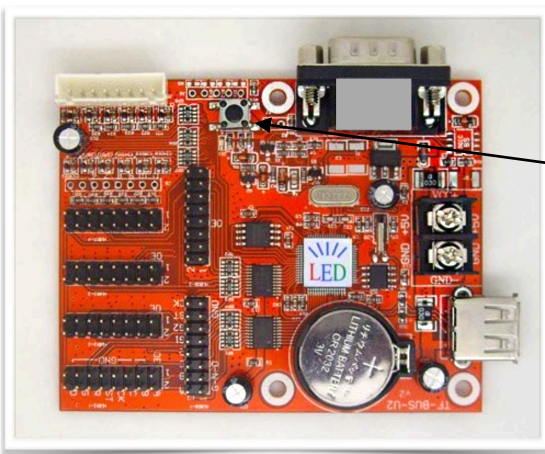
- connect serial cable RS-232

Wiring diagram

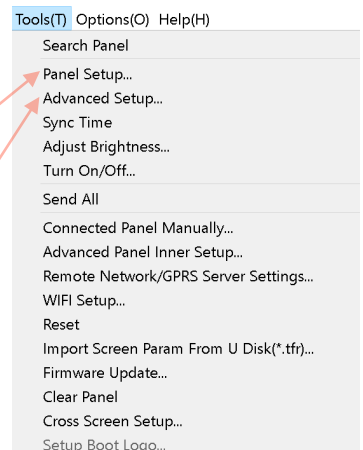


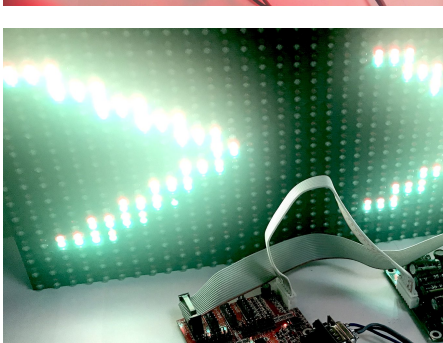
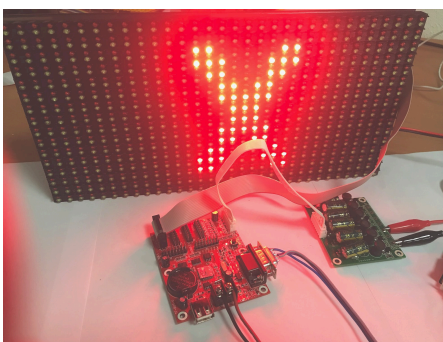
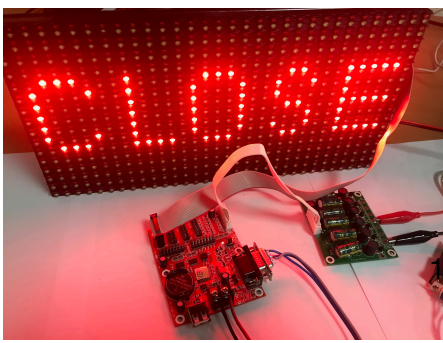
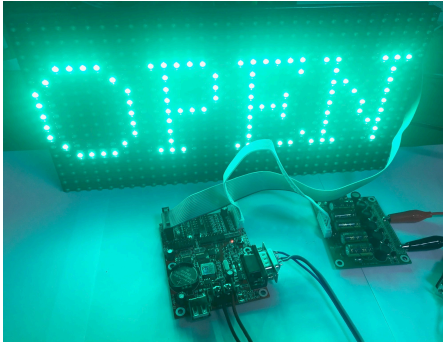
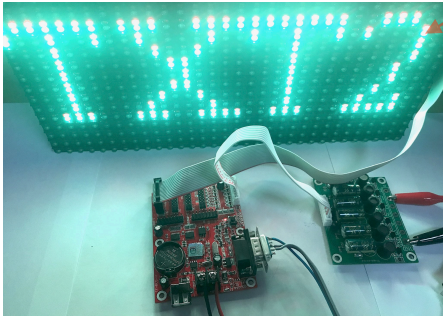
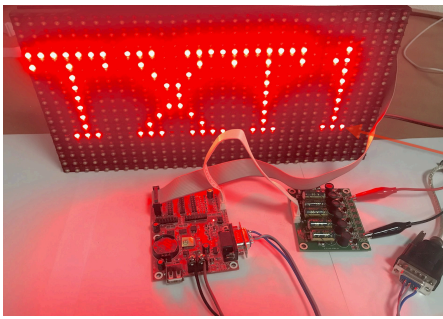
- find TF-BUS-U1/U2 controller

- create Program1 ... Program6
- input switch 1 -> program1
- input switch 2 -> program2
- |
- input switch 6 -> program6



- test button for LED module
- configuration must be made based on type LED module
- password are 168 and 888





untitled - PowerLed V2.89.4*

File(F) Edit(E) Tools(T) Options(O) Help(H)

Search Prog Text Clk Time Image Video Anim Tab Tmpr Coun Wnd Del Sync Turn

EUROLITE(COM7)

- Program1
 - Text1(TXT1)
- Program2
 - Text1(TXT2)
- Program3
 - Text1(OPEN)
- Program4
 - Text1(CLOSE CLOSE)
- Program5
 - Text1(X)
- Program6
 - Text1(> > > > >)

Preview

Options

Name: Text1

X: 0 W: 32

Y: 0 H: 16

Edge: Nor Act: Anti

Spd: 3 Color: Ranc

Effect Options

Act: Direct

Spd: 1

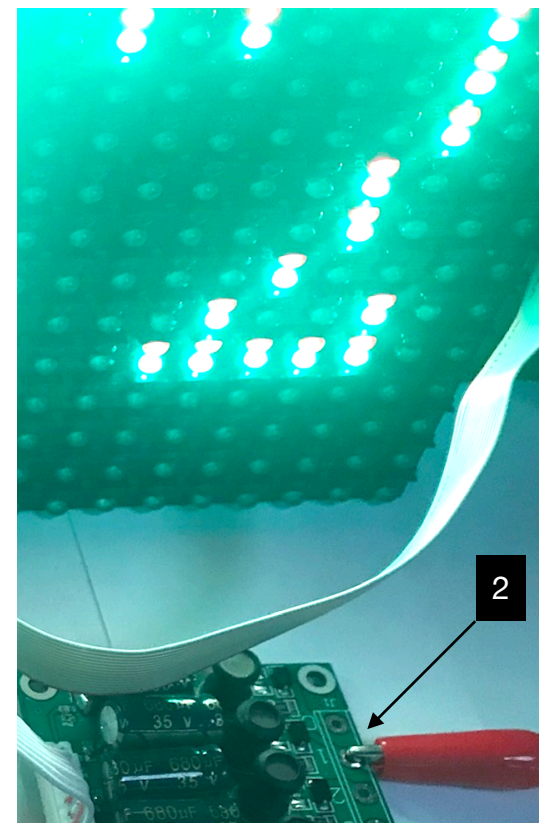
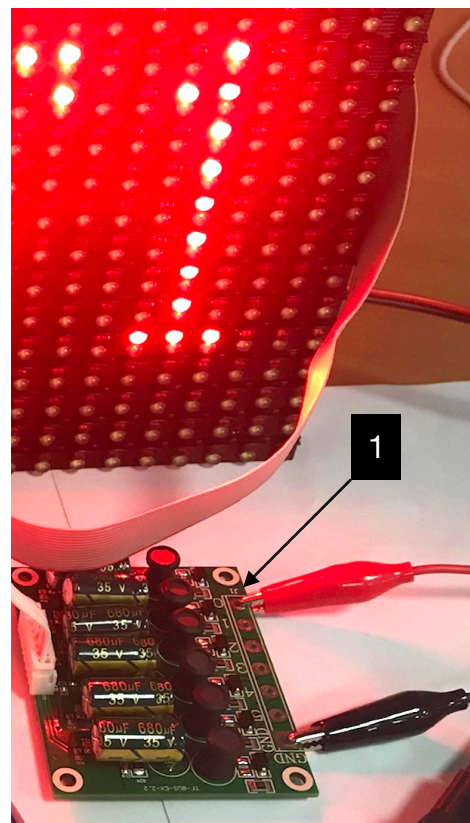
Hold: 1 Sec

Clear: None

Step: 1

Times New Roman 20 Red Black

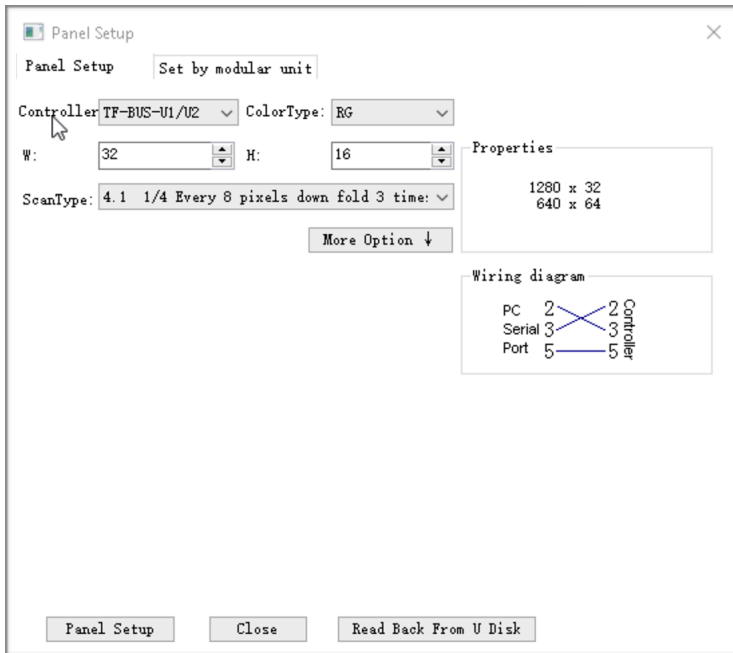
Send project to selected Panel. Connected COM7



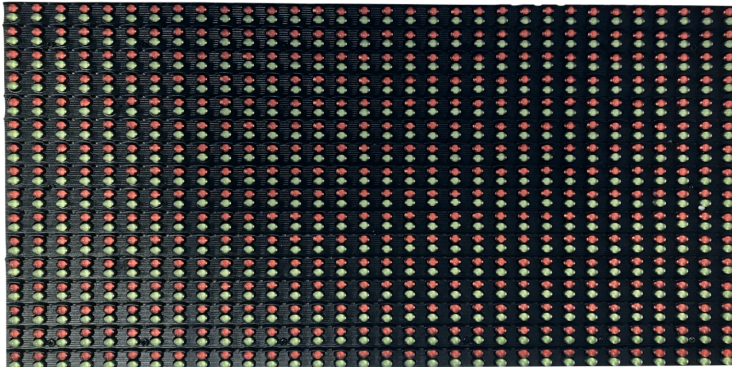
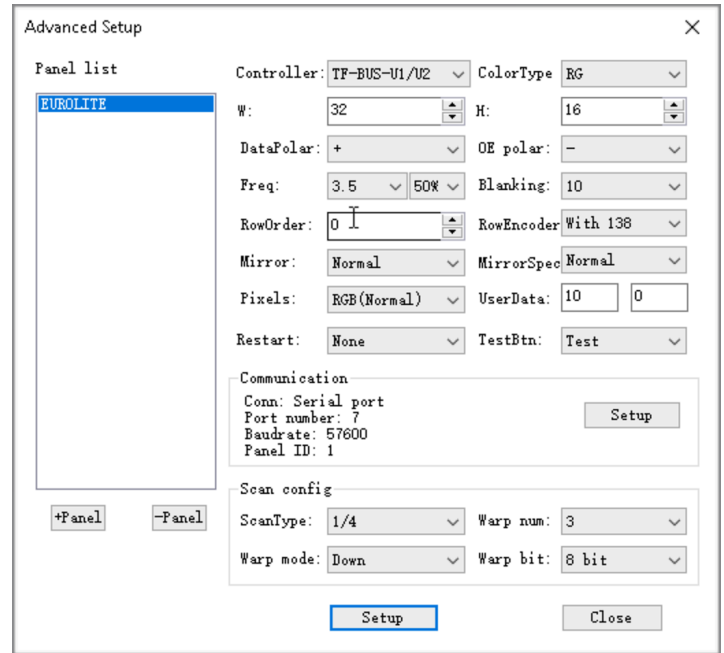
- picture and text can be show
- manual brightness control (no automatic)



Panel setup password 168

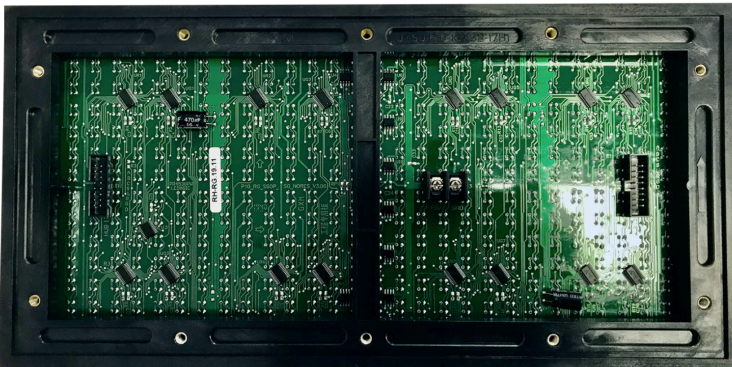


Panel setup password 888



800.23 P10 RG LED matrix modulen rood/groen outdoor HUB12

Also other type LED modules can be configured.



Main functions TF-BUS-U1/U2

- TF-BUS-U1/U2 is a button-on-demand controller.
- Output available for LED modules;
 - 2 pcs. HUB08 interface
 - 4 pcs. HUB12 interface
- Support maximum pixel is 640*64.
- Update the programs -> interface RS232 or USB.
- 6 programs can be used button-on-demand